

## Test Report



Report No. A225053205810100102

Page 1 of 7

Company Name NINGBO XINQIAO CHEMICALIND CO.,LTD

shown on Report

Address NO98 JINJIRD,BEILUNDISTRICE NINGBO CITY,ZHEJIANG PROVINCE

The following sample(s) and sample information was/were submitted and identified by/on the behalf of the applicant

Sample Name expandable polystyrene  
Model No. E/B/H/F/FM/FG grade  
Sample Received Date Jul. 24, 2025  
Testing Period Jul. 24, 2025 to Jul. 29, 2025

**Test Requested** As specified by client, to test Lead (Pb), Cadmium (Cd), Mercury (Hg), Hexavalent Chromium (Cr(VI)), Polybrominated Biphenyls (PBBs), Polybrominated Diphenyl Ethers (PBDEs), Phthalates (DBP, BBP, DEHP, DIBP) in the submitted sample(s).

**Test Method** Please refer to the following page(s).

**Test Result(s)** Please refer to the following page(s).

## Conclusion

Tested Sample	According to standard/directive	Result
Submitted Sample	RoHS Directive 2011/65/EU with amendment (EU) 2015/863	PASS

PASS means that the results shown on the report comply with the limits set by RoHS Directive 2011/65/EU with amendment (EU) 2015/863.



Approved by

Hill Zheng

Date

Jul. 29, 2025

Hill Zheng

Technical Manager

No. M827991890

Centre Testing International Group Co.,Ltd.

CTI Building, Xing Dong Community, Xin'an Sub-district, Bao'an District, Shenzhen City, Guangdong Province, P.R. China

Test Report

Report No. A225053205810100102

Page 2 of 7

Test Method

Test Item(s)	Test Method	Measured Equipment(s)
Lead (Pb)	IEC 62321-5:2013	ICP-OES
Cadmium (Cd)	IEC 62321-5:2013	ICP-OES
Mercury (Hg)	IEC 62321-4:2013+AMD1:2017 CSV	ICP-OES
Hexavalent Chromium (Cr(VI))	IEC 62321-7-2:2017 and/or determination of Total Chromium by IEC 62321-5:2013	UV-Vis/ICP-OES
Polybrominated Biphenyls (PBBs)	IEC 62321-12:2023	GC-MS
Polybrominated Diphenyl Ethers (PBDEs)	IEC 62321-12:2023	GC-MS
Phthalates (DBP, BBP, DEHP, DIBP)	IEC 62321-12:2023	GC-MS

## Test Report

Report No. A225053205810100102

Page 3 of 7

## Test Result(s)

Tested Item(s)	Result	MDL	Limit
	001		
Lead (Pb)	N.D.	2 mg/kg	1000 mg/kg
Cadmium (Cd)	N.D.	2 mg/kg	100 mg/kg
Mercury (Hg)	N.D.	2 mg/kg	1000 mg/kg
Hexavalent Chromium (Cr(VI))	N.D.	8 mg/kg	1000 mg/kg
Tested Item(s)	Result	MDL	Limit
	001		
Polybrominated Biphenyls (PBBs)			
Monobromobiphenyl	N.D.	25 mg/kg	1000 mg/kg
Dibromobiphenyl	N.D.	25 mg/kg	
Tribromobiphenyl	N.D.	25 mg/kg	
Tetrabromobiphenyl	N.D.	25 mg/kg	
Pentabromobiphenyl	N.D.	25 mg/kg	
Hexabromobiphenyl	N.D.	25 mg/kg	
Heptabromobiphenyl	N.D.	25 mg/kg	
Octabromobiphenyl	N.D.	25 mg/kg	
Nonabromobiphenyl	N.D.	25 mg/kg	
Decabromobiphenyl	N.D.	25 mg/kg	
Tested Item(s)	Result	MDL	Limit
	001		
Polybrominated Diphenyl Ethers (PBDEs)			
Monobromodiphenyl ether	N.D.	25 mg/kg	1000 mg/kg
Dibromodiphenyl ether	N.D.	25 mg/kg	
Tribromodiphenyl ether	N.D.	25 mg/kg	
Tetrabromodiphenyl ether	N.D.	25 mg/kg	
Pentabromodiphenyl ether	N.D.	25 mg/kg	
Hexabromodiphenyl ether	N.D.	25 mg/kg	
Heptabromodiphenyl ether	N.D.	25 mg/kg	
Octabromodiphenyl ether	N.D.	25 mg/kg	
Nonabromodiphenyl ether	N.D.	25 mg/kg	
Decabromodiphenyl ether	N.D.	25 mg/kg	

## Test Report

Report No. A225053205810100102

Page 4 of 7

## Test Result(s)

Tested Item(s)	Result	MDL	Limit
	001		
Phthalates (DBP, BBP, DEHP, DIBP)			
Dibutyl phthalate (DBP) CAS#:84-74-2	N.D.	50 mg/kg	1000 mg/kg
Butyl benzyl phthalate (BBP) CAS#:85-68-7	N.D.	50 mg/kg	1000 mg/kg
Di-(2-ethylhexyl) phthalate (DEHP) CAS#:117-81-7	N.D.	50 mg/kg	1000 mg/kg
Diisobutyl phthalate (DIBP) CAS#:84-69-5	N.D.	50 mg/kg	1000 mg/kg

## Sample/Part Description

No.	CTI Sample ID	Description
1	001	Transparent plastic grains

**Remark:** -According to the client's statement, the reasons for the multiple information in the "sample information" of this report may include (but are not limited to): supplying to different buyers, being sold to different countries or regions, former names, or mixtures of several substances.

-MDL = Method Detection Limit

-N.D. = Not Detected (<MDL)

-mg/kg = ppm = parts per million

-1000 mg/kg = 0.1%

- According to the client's statement, the Company Name shown on Report in this report and the Company Name shown on Report in the report A2250532058101001 are the Group-Branch relations, the test result(s) of this report is/are presented in reference to the result(s) that reported in A2250532058101001.

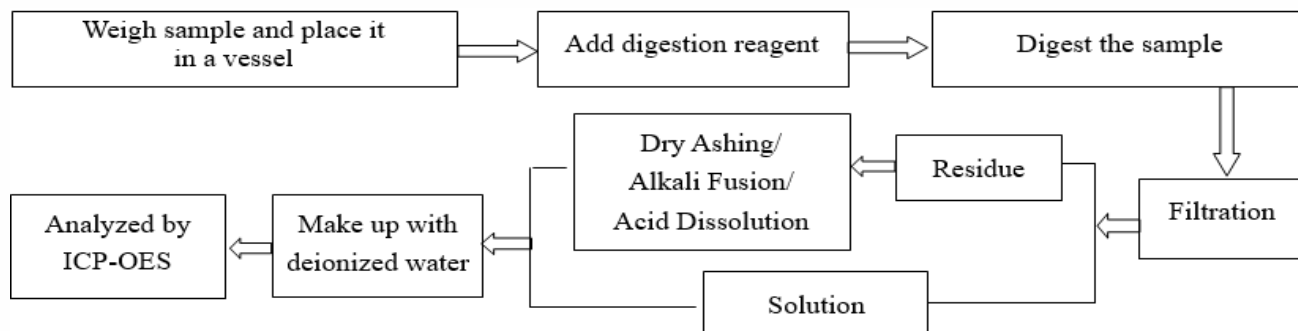
# Test Report

Report No. A225053205810100102

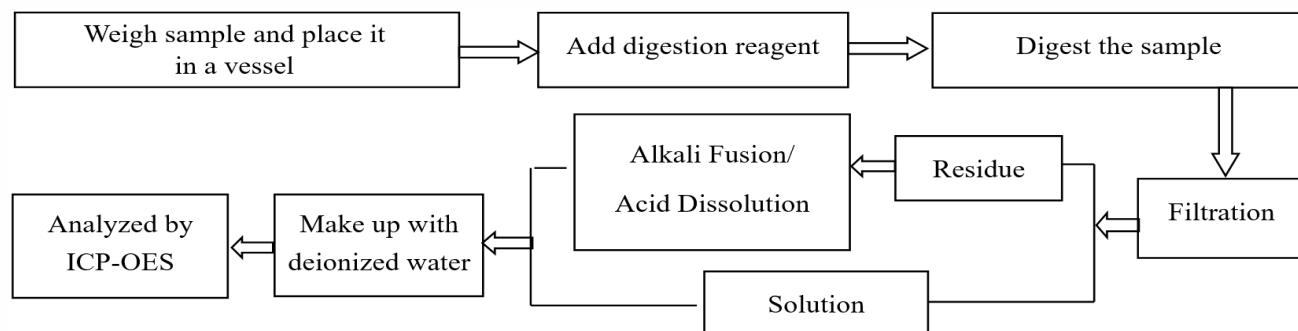
Page 5 of 7

## Test Process

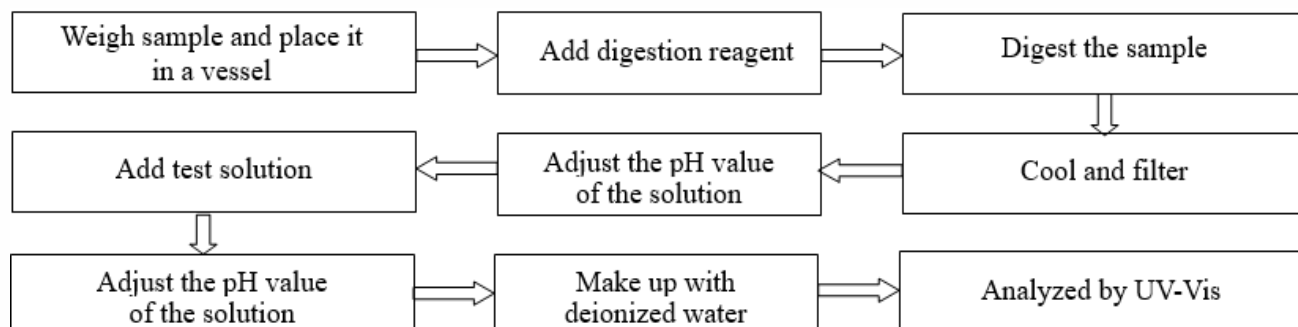
### 1. Lead (Pb), Cadmium (Cd), Chromium (Cr)



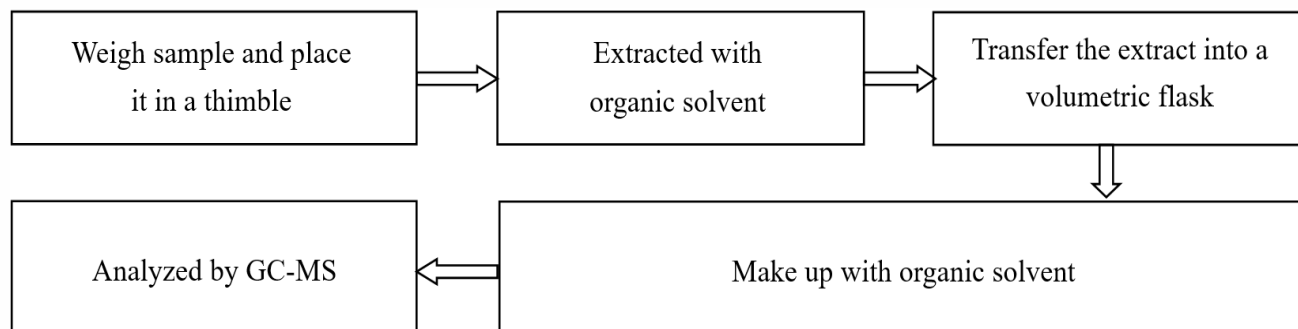
### 2. Mercury (Hg)



### 3. Hexavalent Chromium (Cr(VI))



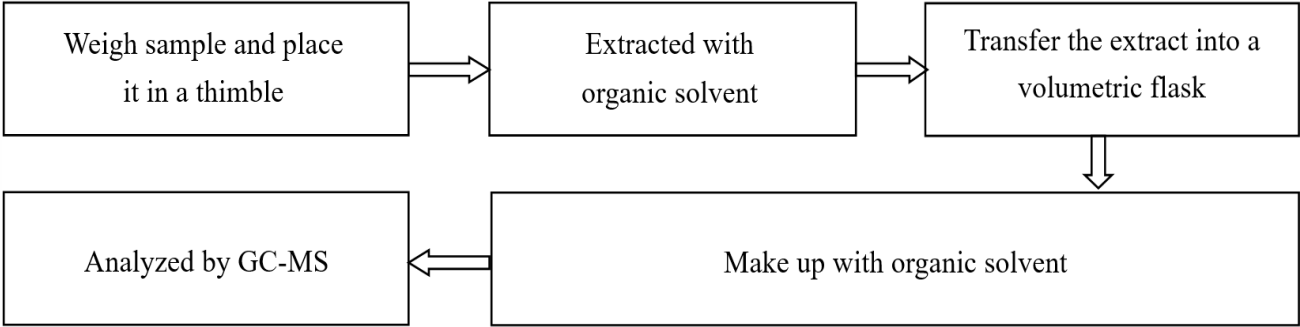
### 4. Polybrominated Biphenyls (PBBs), Polybrominated Diphenyl Ethers (PBDEs)



Test Report

Report No. A225053205810100102 Page 6 of 7

5. Phthalates (DBP, BBP, DEHP, DIBP)



华测检测有限公司

